

ALUMINIUM & ARCHITECTURE

CUSTOMER REFERENCE FOR
HUECK GMBH & CO. KG LÜDENSCHIED

LIPPSTADT CAMPUS

ALUMINIUM SYSTEMS 
HUECK
GERMAN ENGINEERING SINCE 1814

CONCRETE AND GLASS IN DIALOGUE WITH NATURE

Communication, functionality and integration into the unspoilt meadow landscape – these were the guiding principles for the construction of the new Lippstadt Campus. In a design competition held by the main contractor, Bau- und Liegenschaftsbetrieb (BLB) NRW, Soest, the design by Düsseldorf-based RKW Architektur+Städtebau was chosen out of a range of designs by more than ten international architectural firms, some of them international. With a relatively small budget, the firm designed a linear ensemble of buildings flooded with light and grouped around a central campus. To give the complex a simple, clear overall look, the architects attached great importance to the design of the detailed elements. As part of this process, Hueck collaborated with Geldern-based Metallbau Vos to realise a customised solution with elements including two-coloured window strips.

The state of North Rhine-Westphalia has invested around 150 million euros in this site, which forms part of the Hamm-Lippstadt University of Applied Sciences. The area of the new university campus, which was inaugurated in 2014, lies between the historic centre of the town of Lippstadt and the extensive pastureland along the banks of the River Lippe. A construction period of two years yielded a modern teaching and research institute providing technical courses of study for up to 2,000 students.

COMMUNICATION AS A CENTRAL THEME

It goes without saying that this university, founded in 2009, offers modern campus life characterised in all areas by creativity, openness, tolerance and team orientation. The central theme of “communication” was therefore also to be reflected in the architecture. With this in mind, RKW grouped the two- and three-story buildings, four of them in total, around a central square that would accordingly become a communication hub in its own right. As all of the entrances open out into the square, almost every path automatically leads people across this open-air space, which is planted with trees. Here, long benches invite people to linger for a while and offer a venue for discussion. “For students and teachers, this lively intersection acts as a place to meet people and as a venue for communication – in other words, it forms the social hub of the university,” explains RKW design architect Karl-Hans Lentzen. In most of the buildings, the theme of meeting people is carried into the

interior spaces by generously sized foyers. With their expansive areas of glazing, these entrance areas not only serve as an exhibition space and a venue for communication but also create an almost fluid connection between the indoors and outdoors.

HARMONY BETWEEN LANDSCAPE AND THE BUILT ENVIRONMENT

To the north, the campus area adjoins the expansive meadows that stretch along the banks of the River Lippe. Another main emphasis of RKW’s design was therefore the harmonious integration of the new buildings into the surrounding landscape. The existing natural spaces were conserved as far as possible, thanks to the compact and concentrated arrangement of the horizontally laid-out buildings. At the same time, the simple elegance of the façade, which is made of aluminium, glass and light-coloured brickwork, emphasises the clarity of the ensemble and unobtrusively connects it to the adjacent pastureland. Visually, this natural landscape is carried deep into the university grounds by two U-shaped buildings with green patio areas facing the river. “We wanted people to be able to experience nature from within the campus,” emphasises Lentzen. “The idea was to have the built environment and green spaces stand in harmony with one another and intermingle.” This impression is further emphasised by the permeable, open design of the ensemble, with its glazed, transparent foyers and large strips of windows.

DETAILS OPTIMISE THE OVERALL IMPRESSION

"The overall look of the complex was intended to take account equally of the rural setting and of the university's technical orientation," emphasises Lentzen. "Here, we wanted to achieve an interplay between bold design and functional clarity." The designers were therefore particularly concerned with the details in their efforts to "dot the i's and cross the t's", as the famous saying goes. Among other techniques, therefore, the outward look of the element façade was achieved using rhythmic window strips made of Hueck Lambda window profiles. On each storey, these box-like window strips stand proud with windowsills that reach outwards from the windows. "The visible sunshade at the top edge was incorporated into the design, thereby heightening the three-dimensional effect," Lentzen explains. "This slightly 3D look lends the façade a certain tranquillity and grandeur."

A COLOURED "SLIMMING DEVICE" FOR WINDOW STRIPS

For another small but beautiful detail in the design, Hueck worked with Metallbau Vos to implement a special, customised solution at the architect's request: as the plan included wide mullions between the windows from the HUECK Lambda 77 L IF series (with concealed sashes) in order to maintain flexibility in terms of the division of space, it was necessary to add some colour in order to loosen up the outward look of the frames. In a meeting with Hueck's architectural adviser Uwe Haufschild, the architect's rough sketch of the design idea quickly developed into a possible technical solution for the two-coloured frame. "It would have been too costly to powder-coat the outside frame elevation in two different colours," explains Haufschild. The solution therefore emerged to create a supplementary profile that could be mounted onto the actual frame profile.

01

General view:

The linear building ensemble is grouped around a central campus..

02

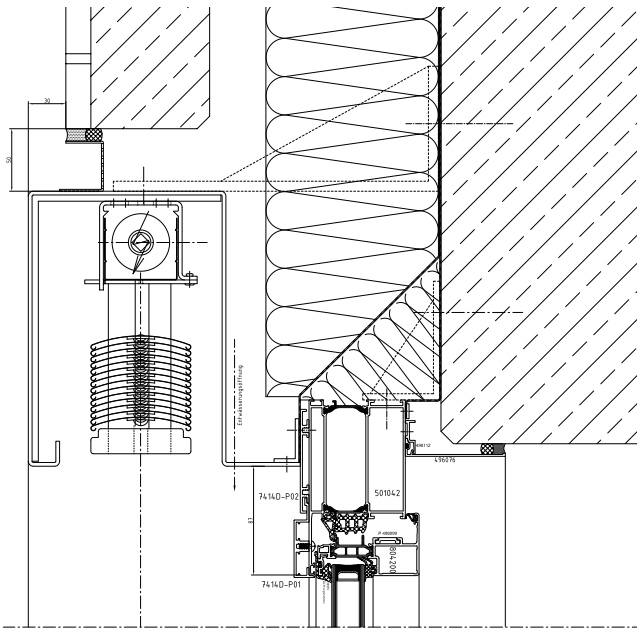
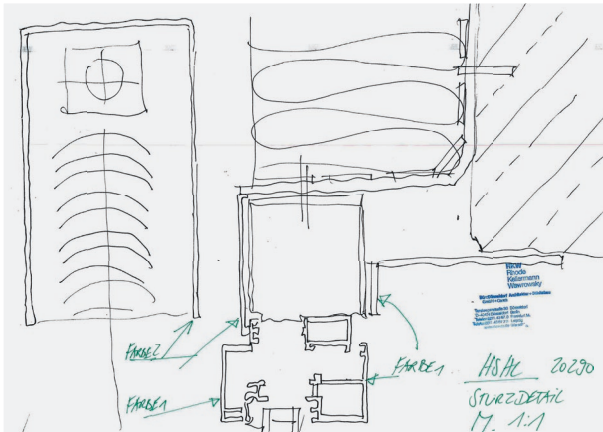
From the design idea to the technical realisation:

a special, customised solution with a coloured supplementary profile lends the frames a more slender outward appearance.

CLOSE COOPERATION WITH METALWORKER AND ARCHITECT

Haufschild passed the idea he had discussed with the planner on to Hueck's design engineers. "So we had to develop a solution that satisfied not only the artistic and technical demands but also the economic ones," explains Wolfgang Meister from the Hueck project department. As the design would also require a very accurate fit, it was also necessary to work closely with the metalworking company on this aspect. In the final, customised solution, the colour of the sash profile is complemented by a supplementary profile whose coating is one shade lighter, accentuating the outlines of the window and thereby giving the frame a more elegant appearance.

"When it comes to aesthetics, an architect wants to be free, or as free as possible, from the system specifications," explains Haufschild in reference to the Hueck design. "We translate their design requirements into a functioning system." RKW was therefore delighted not only with the result but also with the collaboration. "As planners, of course, we always keep one eye on the bigger picture," says Lentzen. "So, when it comes to the details, we are often dependent on support from specialists. Hueck did some excellent preliminary work in this project, and their multifaceted advice was a real help to us in the relevant areas."





01

Window strips:

The outward look of the element façade was achieved using rhythmic window strips made of Lambda 77 L profiles.

02

Entrance area:

Foyers with expansive areas of glazing emphasise the transparent feel of the complex.

BRIEF INFO

HUECK CONSTRUCTIONS:

Lambda 77 L IF special construction,
Trigon 50, Lava 77-30

MAIN CONTRACTOR:

Bau- und Liegenschaftsbetrieb (BLB)
NRW, Soest

ARCHITECTS:

RKW Rhode Kellermann Wawrowsky,
Düsseldorf

METALWORK:

Metallbau Vos GmbH, Geldern;
Brandschutzkonstruktionen Mihla
GmbH, Mihla



HUECK GMBH & CO. KG

Loher Straße 9
58511 Lüdenscheid
info@hueck.com
hueck.com



HUECK Dokumentation App
<http://qr.hueck.com/docuapp>



HUECK YouTube-Channel
www.youtube.de/hueckaluminium



HUECK 3D App
<http://qr.hueck.com/3dapp>

Company stamp

Current information and a comprehensive download section can be found at WWW.HUECK.COM

Subject to our "General Terms and Conditions of Sale", which are available on our website or which we will be happy to send you on request.